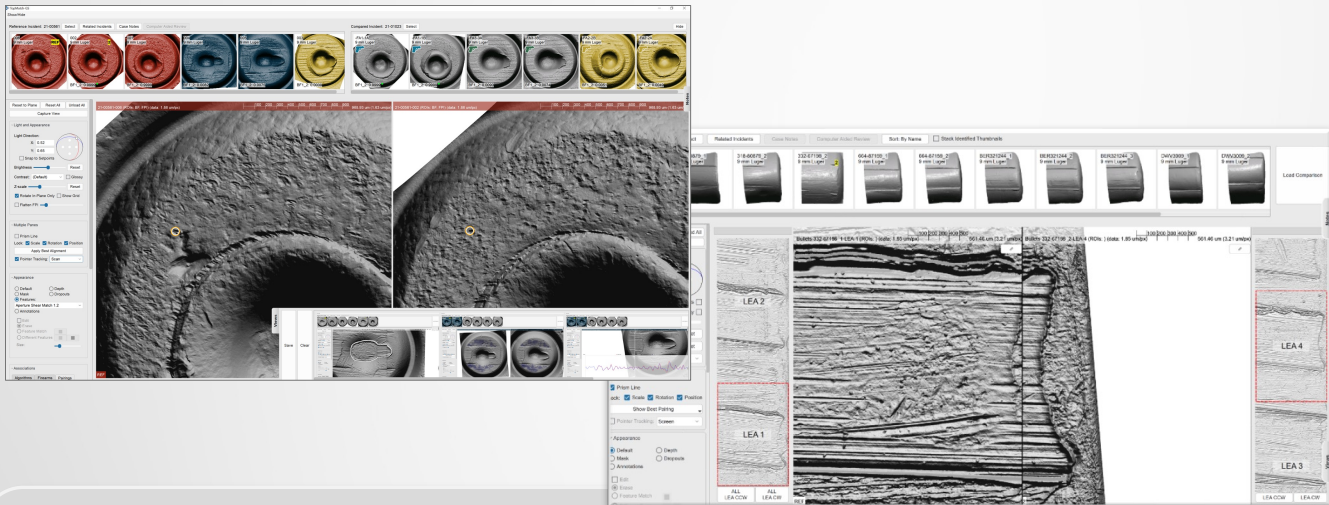




CADRE FORENSICS

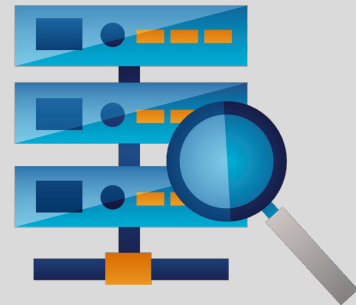
TOPMATCH 2.0

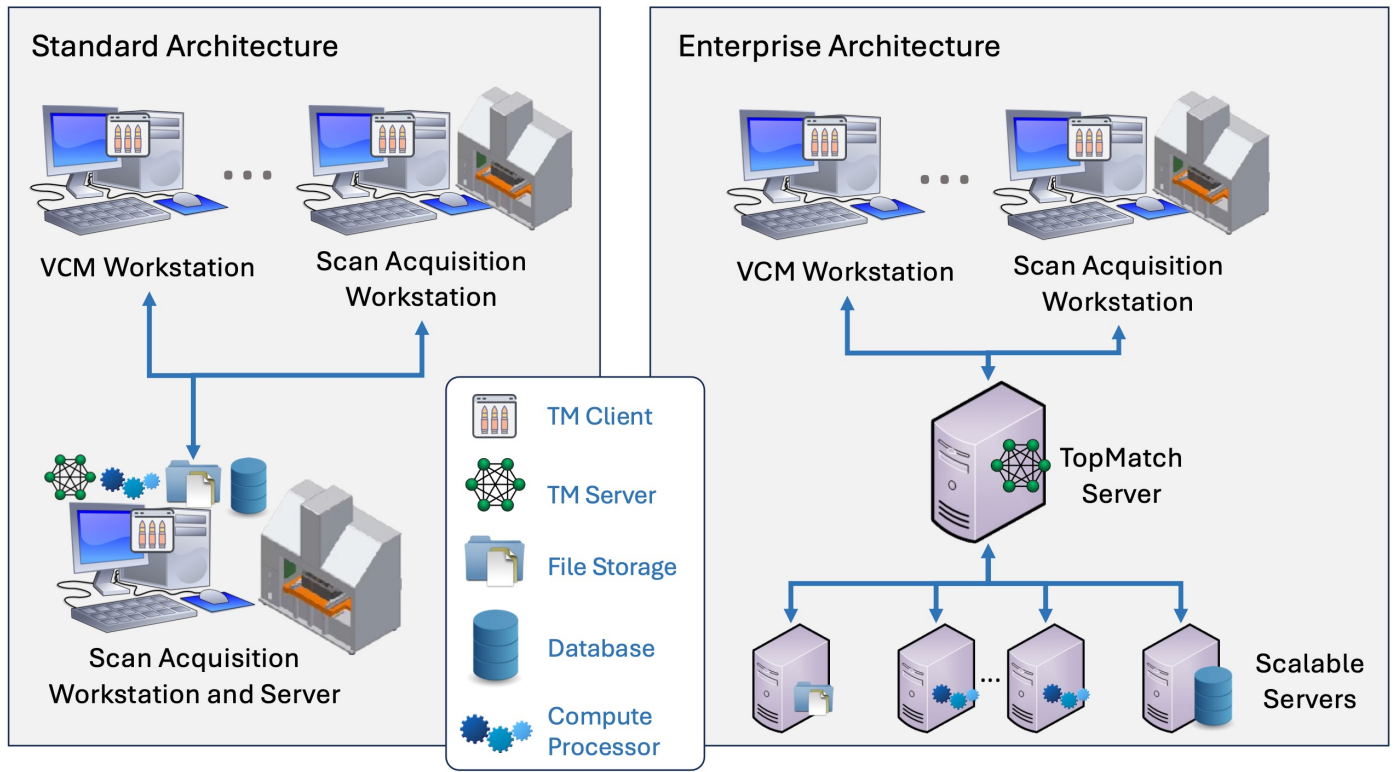
TopMatch 2.0 is the next-generation upgrade to the world's leading 3D Virtual Comparison Microscopy (VCM) platform. With a fully redesigned back-end architecture, TopMatch 2.0 is built for seamless remote access, scalability, and speed — while maintaining the same familiar user interface that examiners trust.



Key Benefits of TopMatch 2.0

- **Scalable Architecture** – Expand effortlessly with multiple scanners, VCM workstations, compute processors, and databases.
- **True Remote Access** – Perform full VCM analysis from anywhere with much faster speeds than previous versions.
- **Unlimited Users, No Per-Seat Fees** – Unlike competitors, TopMatch 2.0 allows unlimited users without additional licensing costs.
- **High-Performance Compute Processing** – Scale your system by adding Compute Processors for faster search times.
- **Continuous Automated Database Search** – Sentry Search runs in the background, continuously comparing newly scanned best exemplars to historic data.
- **Multi-Database Support** – Organize casework, validation studies, and research projects separately.
- **Built-in Active Directory Integration** – Simplify user access control and security.
- **User-Level Access Controls** – Assign role-based permissions and database-specific access to ensure secure and efficient workflows.
- **Industry-Proven Technology** – Validated by labs across North America and admitted in U.S. courts.



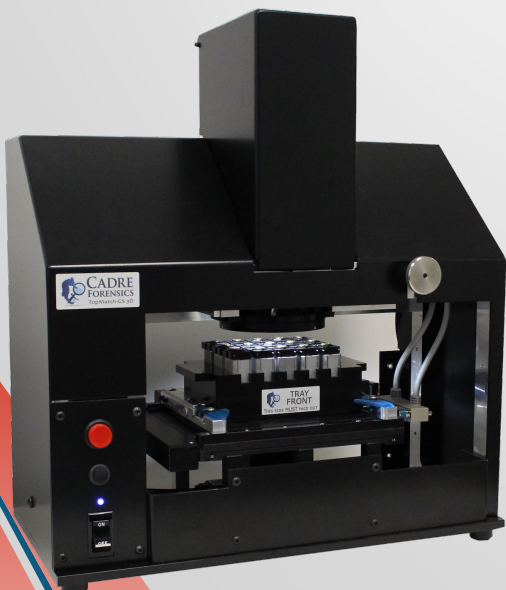


TopMatch 2.0 Configuration Options

Flexible for Any Lab Size

Whether you're running everything on a single workstation or a large lab that's managing enterprise-level infrastructure, TopMatch 2.0 adapts to your needs. Larger labs can add multiple Compute Processors for increased speed, while IT-managed environments can fully separate system components.

- ✓ **Compatible with All VCM Functions:** Triage, database search, casework reports, and more.
- ✓ **Full x3p File Format Support:** Ensures compatibility across scanning systems.
- ✓ **Always Improving:** Continuous software updates with new features and enhancements.



Now, labs of any size can optimize their workflow with flexible configurations, enhanced database management, and unlimited remote access—all without per-seat licensing fees. Whether you're working from your desktop, across your organization, or off-site, TopMatch 2.0 delivers the next generation of examination power you need.

CADRE FORENSICS

Chicago, Illinois (312) 620-9958
 Forensics@CadreForensics.com
 www.CadreForensics.com